



The REEDER

Visit us on the Internet at
www.gatewayharmonicaclub.org

NEWS & VIEWS by Mary Ann Love

GET WELL

Teresa Stieven has been at St. Mary's Health Center on Clayton Rd. for surgery and recovery from a collapsed lung and is now at home. Louise Cook spent about a week in St. John's Mercy Medical Center with a bout of pneumonia. Rich Krueger reports that Lillian is now being cared for at home after almost four months of hospital confinement. He is encouraged by her progress. Wally DeShon was hospitalized in Edwardsville, IL with heart conditions. Geza Dombi had a hip replacement on November 12 and will return to the club when he is able. Well wishes to all!

1ST WOMAN PRESIDENT!!

Results of our December 6 election of officers for the 2006-2007 term are as follows:

President – Mary Ann Love
 Vice President – Bill Dulin
 Secretary – Christine Pondo
 Treasurer – Buddy Hirsch (2nd term)

Note from Your New President::

Thank you for placing your confidence in me. It is an honor and I will try to do my best job. I would like to take this opportunity to thank all those who came before to make the club what it is today. The members are who make the club a success. Thanks also to each of you for your continued interest and participation in all club matters. Your ideas and suggestions are welcome.

Mary Ann Love

COUNT YOUR BLESSINGS

Our sympathy goes out to Ria Meagher on the loss of her new little red Toyota when the car behind her

failed to stop and crushed her under a truck. Ria's heart was broken to see her red car retire to the junk yard, but thankful that no-one was seriously hurt, only a few bruises. This happened just before Thanksgiving and Ria counted her blessings because things could have been much more serious. Ria was happy to have her car replaced with another much like it, only newer!

SOMETHING DIFFERENT

Gateway Harmonica Club was scheduled to perform at the Pevely Flea Market on December 3. We did not know what to expect. A group of about 18 assembled and we were directed to a staging and seating area and

played Christmas and other songs to the merry shoppers. It was good to see Louis Drinen from Herculaneum, MO attend and he played a couple songs about the Ozark Mountains on his harmonica/mandolin combination.

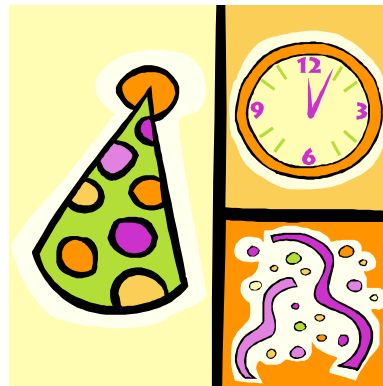
Louie said he makes the circuit of 16 nursing homes where he entertains each month. Jim Melchers brought on a few surprised smiles when he played *Blue Christmas* on his blues harp. Chris Pondo added yet another dimension when she vocalized several Christmas songs and jingled a

few bells. Melba (Boots) Lackey

showed up and visited with many of her friends. It was a fun day and the wives who rode along got to shop!

CHRISTMAS PARTY

Thanks again to the spouses group who sponsored the party following the business meeting on December 6. The ladies always make a special effort to decorate and prepare the goodies for our enjoyment. They also socialize and have a good time while they are at it. Thanks to all!



THE GHC REEDER is a bimonthly publication of the Gateway Harmonica Club, Inc. of St. Louis, Missouri, a nonprofit organization dedicated to the preservation and advancement of the harmonica. The club meets weekly on Tuesdays at 7:00 PM at the Rock Hill Baptist Church, 9125 Manchester, Brentwood, MO.

Inquiries about membership should be directed to:

Buddy Hirsch, Treasurer
 47 Orchard Lane
 Kirkwood, MO 63122
 (314) 821-8651
 e-mail: BuddyHarmonica@aol.com

For information about club activities and performances, contact:

Mary Ann Love, President
 1162 Villa Flora Dr.
 O'Fallon, MO 63366-4443
 (636)-379-7707
 e-mail: maryannlove@charter.net

All other correspondence should be directed to:

Christine Pondo
 Recording & Corresponding Secretary
 1166 Waldorf Drive
 St. Louis, MO 63137-1730
 (314) 868-9557

Information about the club's activities is also available on the World Wide Web at:

www.gatewayharmonicaclub.org

Happy Birthday!!!

Birthday greetings are extended to the following members of the GHC family who are celebrating birthdays in January and February.

<u>January</u>		<u>February</u>	
Frank Muriel	1/3	Amanda Warren	2/8
Teresa Stieven	1/4	Ernie Roberts	2/21
Alfred Perry	1/5	Von Rhey Ford	2/24
Cleta Hessel	1/5	Sidney Wolff	2/26
Ed Heiningner	1/8	Sandy Bonfiglio	2/27
Pauline Guelbert	1/10		
Chuck Turner	1/12		
John Bottchen	1/15		
Tom Komadina	1/24		
Johanna Sutterfield	1/28		

2005 CHARITY CONTRIBUTIONS:

Club members expressed a voice in the distribution of the 2005 year-end funds, and results of balloting were calculated and rounded off on a percentage basis.

Rock Hill Baptist Church	\$400.00
Post-Dispatch 100 Neediest Cases	200.00
Shriner's Hospital for Children	100.00
Salvation Army Tree of Lights	100.00
Cardinal Glennon Children's Hospital	100.00
Make a Wish Foundation	50.00
Kidney Foundation	<u>50.00</u>
___TOTAL	\$1,000.00

\$1,500 had already been donated by GHC to the Salvation Army, Red Cross and Catholic Charities in time of urgent need following Hurricane Katrina. Memorial funds are also disbursed throughout the year, as appropriate.

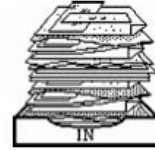
The total for all charitable contributions for the year 2005 was \$4,550.00.

Thanks to all who make these donations and our club a success.

DONT FORGET: DUES ARE DUE JANUARY 31 !!!

Please mail your check to Buddy Hirsch, 47 Orchard Lane, Kirkwood, MO 63122

We Get Letters . . .



10th Dec. 2005

We certainly did enjoy your performance at Pevely Flea Market.

Regina Bright, our promotional director, will try to schedule a visit for next year.

Thanking you,

Richard L. Laiben

* * * * *

Note from Tony Wilbraham to Club Members:

Yes I am still here - but over the past 12 months or so (about the time I had my herniated disc fixed!) I have developed a dry mouth and dry throat problem which coupled with an increase in my 'asthma level' makes playing the harp less than pleasant. Have seen my GP, my allergist and an ENT specialist - and from various tests the 'serious causes' of this problem have been eliminated - but the problem exists - which just leaves 'the ageing process' coupled with 30 years of lecturing! The result is that I now have an expanded supply of sprays, inhalers and tablets - which do provide some temporary relief - if I only remember when and in what order to take them.

C'est la vie. The good news is that our son Andrew and wife Jen and our granddaughter, who was 2 last Oct, will be traveling from Fort Hood TX to be with us over Christmas. Andrew is with the 1st cavalry and will be made a company commander in March - but the not such good news is that he will be starting a second tour in Iraq next October.

Please extend my Christmas Greetings and Best Wishes for 2006 to the GHC members. Cheers - and Merry Christmas.

Tony

* * * * *

Elmer Anderson's daughter writes the club that he has a new address and phone:

Elmer Anderson
1001 "M" Street
Barling, AR 72923
(479) 484-5964

Elmer was a long-time friend of Dan Perez and has been an Associate Member of GHC for many years. I'm guessing that he is in his eighties.

* * * * *

Please note the following change of address for:

Bill & Sharon Davis
301 Gullane
St. Charles, MO 63301
(636) 896-0701 (no change)

12 Things It Took Me 50 Years to Learn

1. Never take a sleeping pill and a laxative on the same night.
2. There can be a fine line between "hobby" and "mental illness."
3. People who want to share their religious views with you almost never want you to share yours with them.
4. You should never confuse your career with your life.
5. No matter what happens in life, somebody will find a way to take it too seriously.
6. Nobody cares if you can't dance well. Just get up and dance.
7. Never lick a steak knife.
8. Take out the fortune before you eat the cookie.
9. The most destructive force in the universe is gossip.
10. Nobody can give me a clear and compelling reason why we observe daylight-saving time.
11. A person who is nice to you but rude to the waiter is not a nice person.
12. Your friends love you, no matter what.

Thanks to Sid Wolff for sharing the above thoughts to ponder taken from Readers' Digest.

HOW I BEGAN MY HARMONICA "LIFE"

by Doreen Scurlock

It was March, 1990. I had been retired for three months now and still wondering what to do with myself. It was very strange not having an identity like at work where I was supervisor of three departments in a psychiatric hospital and Administrative Assistant to the Superintendent. I had worked in this field for 35 years and now I was alone.

One afternoon I saw a harmonica group leaving a nursing facility where they had just performed, according to the picture in the paper. I called up the leader and requested an audition. I was told they played a chromatic harp (I had never laid eyes on one), and it had a button on the side. I used to play a double-sided Echo harp – one side was key of C; the other G. I played mostly around the campfire when camping during the 60's and 70's with my family. Sometimes I played Christmas carols for the patients at the hospital at Christmas. The Echo harp was bought at a pawn shop in 1970.

My husband, Bob, went to a music store and brought me a Hohner 12-note, key of C chromatic and I took it to the "audition." I was planning to sit on the sidelines and listen to the group, who were known as the *Jacks and Jills* from the Upper Arlington Senior Center. Well, was I in for a surprise! They had a seat just for me in the center of the group next to a member; told me to come sit there and play! I played with them for two weeks and the third week went on my first gig! I couldn't believe how much I was enjoying this group and the music. I bought an amplifier and

mic and settled in as a natural. That is how I got started playing a chromatic harp back in 1990.

Many of you know that today I am a life member of the Buckeye Club as well as a member of the Gateway Harmonic Club. I found out that I can play almost anything by ear – never learned to read music despite having had lessons at Ohio State University and the Buckeye Club. Just never could "get" it. From 1995 to 2000 I was the booking agent for the *Jacks and Jills* and in 1990 we did 90 performances in that one year. Mostly we did around 60 to 80 per year, plus I was active with the Buckeyes until my spinal cord illness developed in 2003.

I still enjoy playing and try to attend SPAH conventions regularly. Also, I do gigs with the Buckeyes when I can. I also enjoy visiting the Gateway Harmonica Club where Bob and I have made many friends over the past years.

From 1995 to 2005 I played on the Queen Elizabeth cruise ship Talent Show four different times and twice on the new Queen Mary ship. This certainly is a far cry from the campfire days!

Editors Note: What Doreen did not tell is that she also sings and plays the Little Lady. But the very best part about Doreen is her outgoing and friendly personality. She has never met a stranger and we always enjoy her visits and positive outlook (and cute English accent). She is a nice lady and also a fun one! Thank you for your inspiring story, Doreen.

Winter

By Christine Pondo

Children are sledding down the hill.
Evergreens shine with falling sleet.
Woolen coats and scarves keep us warm.
And sparrows feast on bittersweet.

Cardinals sing to each other.
The fragrance of pinecones stays.
Families and friends gather close.
To share joyful holidays.

Icicles decorate tall church spires.
Fluffy snow covers the ground.
Frosty moonlight enchants the woods.
Where rabbit and deer tracks abound.

Diamonds glisten in the snow.
Eagles fly high in the sky.
Wood smoke's curling toward the heavens
Beautiful Winter is alive.

TRIBUTES TO DOUGLAS TATE (1934-2005)



On November 16, 2005 the harmonica world lost a stalwart leader and a dear friend. Beyond his excellence as a musician and his insightful and energetic leadership of the SPAH organization, Douglas was a greatly respected and respectful person and friend. As co-chairmen of the 2004 SPAH Convention, Frank Davis and I gained tremendous admiration and fondness for Doug. His winsome character and gentle humor will be long remembered and sorely missed.

-- JF

P.S. -- To learn more about Doug's accomplishments and his contributions to the stature of our cherished instrument, visit <http://www.douglastate.com>.

From Ingo Andersen, longtime friend of GHC:

We have lost a friend, a wonderful gentleman and a giant harmonica icon. I always referred to Douglas as "Sir Douglas" as he to my mind exuded all the virtues needed to be a knight. I don't know exactly what those virtues are, but everything about the man was so classy and genuine. My life was enriched from the moment I first met him at BHF 1997 and through many sometimes 'heated' debates on Slidemeister. One of the greatest compliments of my harmonica playing 'career' was at BHF when Douglas was to follow me on stage and he mused that 'following that Ingo on stage is not an easy thing', notwithstanding the fact that although he could follow anyone on stage, his quiet class always shone through as it did in that moment. He was not afraid to change his opinions about harmonica playing. His dislike for jazz and diatonic music I think was pretty ingrained until he was exposed to SPAH and BHF where he profoundly endorsed both artforms.

May he rest in peace.

* * * * *

From National Harmonica League (UK) Chairman Roger Trobridge:

Douglas Tate's wife, Barbara, asked me to post this for her.

16th November

Douglas passed away peacefully in his sleep at 00:10 GMT, close friends and members of his family shared his last few hours.

He fought his final illness with a quiet dignity and bravery - and of course, humor - that was an inspiration to all who were privileged to help and support him, from however far away. His determination to ensure that his work is not forgotten and the pleasure that his playing gave to so many people will be his enduring legacy.

Douglas's family wish to thank all those friends who supported them through these times and the people involved in all aspects of Douglas's medical care, especially the staff of Willen Hospice, Milton Keynes, UK.

Barbara will post further details on Douglas's web site as they become known.

TZENA, TZENA – AN OLD HEBREW CHESTNUT*(reprinted from Internet sources)*

Why would I have any interest in this old war horse of a song? The lyrics (such as they are) are depasse and sexist. They depict a quaint, almost innocent era entirely unlike our own. The Palmach boys were beautiful, young and pure.

But truth be told, everyone knows this song and loves it. Its melody has great spirit and energy, just like the newly established State of Israel itself in 1948. And it is a joy to perform both because of the spirited audience response and because it's such a happy, blissful song.

Tzema, Tzema was written by Issachar Miron, who was born in Kutno, Poland in 1920. At age 19, he emigrated to Palestine just before the Holocaust and World War II began. He wrote the song during WWII while serving in Britain's Jewish Brigade. His 30 year-old friend, Yechiel Chagiz composed the lyrics. There is a fascinating recounting of how he composed the song (and the landmark copyright claim he won in U.S. courts which returned rights to the song to him).



The Weavers discovered the song in 1950 & recorded it. It was a huge hit (#1 song if I'm not mistaken) for them. I think it was the B-side for Goodnight Irene, another great old chestnut.

Miron and Julius Grossman (who I see credited for "English adaptation") collaborated on the song. When Gordon Jenkins (who arranged the song for the Weavers I believe) and a colleague tried to copyright their version of the song, Miron sued and won.

Tzema, Tzema*Composer: Issachar Miron**Lyrics: Yechiel Chagiz*

Translation from Hebrew:

Go out, go out, go out young women and see
Soldiers from our moshav.

Do not, do not, do not hide yourself away from
A brave son, a man of the army.

Another translation: (There have been many different lyrics/translations to the tune.)

Tzema, Tzema, Tzema, Tzema

Don't you know that you're the darling of the
regiment?

Tzema, Tzema, Tzema, Tzema,

All the soldiers want to see you, why don't you
consent?

See the handsome soldiers gaily riding

Come out from wherever you are hiding

Won't you smile a little for the colonel

Throw some kisses to the rest

Tzema, Tzema, Bashful little Tzema Please don't be
afraid of all the soldier boys, for

Tzema, Tzema, All the boys adore you,

Calling for you Tzema, Tzema, Tzema

Hi, I was named after this song in 1957. My parents liked Mitch Miller, who also helped make it famous, and decided to name me Tzema. I get to explain the origin of it all the time. We are not Jewish, but it is interesting to tell the story. I was told that "Tzen" means "to go" a (female) action verb in Hebrew.

*Tzema M. Scarborough
Spokane, WA*

**"Life should NOT be a journey to the grave
with the intention of arriving safely
in an attractive and well preserved body;
but rather, to skid in sideways,
chocolate in one hand,
wine in the other,
body thoroughly used up,
totally worn out and screaming:
' WOO HOO'
What a Ride!"**

GHC EVENTS CALENDAR

WEEKLY EVENTS

Tuesday evening meetings at Rock Hill Baptist Church, 9125 Manchester, St. Louis, MO 63144:

- 6:30 PM - Blues Group, led by Louise Cook — Everyone welcome
- 7:00 PM - First Tuesday of month: Business Meeting — Everyone welcome
All other Tuesdays: Band Rehearsal — Everyone welcome
- 8:15 PM - Open Mic — Everyone welcome

GIGS AND OTHER EVENTS

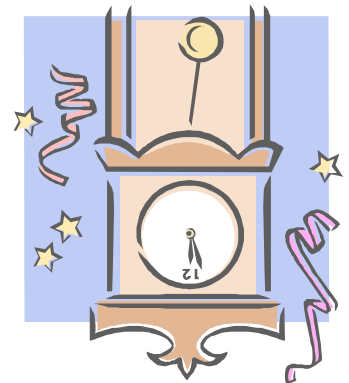
- 1/8/2006 (Sun) 2:15 PM — Delmar Gardens of Chesterfield: 14855 North Outer Rd.--- Chesterfield, MO 63017 (west on I-270 to Chesterfield Parkway; at top of hill, stay in righthand lane; turn right onto North Outer 40, then right into Delmar Gardens driveway.)
- 1/17/2006 (Tue) 6:00 PM — Chromatic course:
- 1/18/2006 (Wed) 2:30 PM — Sara Community--The Anna House: 12349 De Paul Dr., Bridgeton, MO 63044 -- From I-270 exit onto St.Charles Rock Rd. East; right on Mc Kelvey Rd. to DePaul Drive; right at the first stop sign to The Ana House.
- 1/24/2006 (Tue) 10:15 AM — Salvation Army Golden Agers: 825 Union Rd., St. Louis: from I-270, East on I-55 to Bayless Rd.: left to Morganford; right on Morganford to Union Rd.
- 1/24/2006 (Tue) 6:00 PM — Chromatic course:
- 1/29/2006 (Sun) 2:00 PM — Brooking Park: 307 S. Woods Mill Rd., Chesterfield, MO 63017 -- Hwy 40 /61 West to Hwy 141/Woods Mill Rd. North; take the next left after Conway Rd. This is accross the Hwy. from St Lukes Hospital.
- 1/31/2006 (Tue) 6:00 PM — Chromatic course:
- 2/16/2006 (Thu) 7:00 PM — Over 50 Club: St. Barnabas Church, 1400 N. Main St., O'Fallon, MO 63366: West on I-70 to Hwy M; North on Main St. for about 2 miles to junction P and M; turn right on Piper Rd. and M; church is on the Northeast corner. We will play in the basement of the Church.
- 2/19/2006 (Sun) 2:30 PM — Garden Villas South: 3457 Tesson Ferry Rd.: I-270 South to Tesson Ferry Rd.; west about 3 miles to Butler Hill Rd.: follow signs to entrance.
- 2/26/2006 (Sun) 2:30 PM — Delmar Gardens Meramec Valley: #1 Arbor Terrace, Fenton, MO 63026 -- Take hwy 30 West (Gravois Rd.). Cross Hwy 141 and continue to the first stop light. That is Summit--turn right on Summit and take the immediate left on the Outer Rd. Go 1/4 mile on your right and you are there.
- 3/15/2006 (Wed) 8:00 PM — The Claymont Assosiation Inc.: Ballwin Golf Course--333 Holloway Rd. --Ballwin MO. 63011: From Hwy.141 go West a couple of miles. Turn right on Holloway Rd. You should find the entrance about a mile on the left. We will be playing in the Ball Room.
- 4/10/2006 (Mon) 1:30 PM — St. Louis Altenheim: 5408 South Broadway, St. Louis
- 4/19/2006 (Wed) 1:30 PM — Weber Road Branch, St. Louis County Library: From hwy I-270, go East on Hwy 21 (Gravois Rd.), pass Sappington, pass Tesson Ferry Rd. and Weber Rd. is about a mile farther on your right. Turn right and go another mile or so. The library is on your right.
- 5/5/2006 (Fri) 2:30 PM — Delmar Gardens Meramec Valley: #1 Arbor Terrace, Fenton, MO 63026 -- Take hwy 30 West (Gravois Rd.). Cross Hwy 141 and continue to the first stop light. That is Summit--turn right on Summit and take the immediate left on the Outer Rd. Go 1/4 mile on your right and you are there.
- 5/7/2006 (Sun) 12:30 PM — Seniors' Celebration: Parkway Baptist Church--12465 Olive St. Blvd.--On the corner of Olive and Ross. From I-270, go West a quarter of a mile pass TGIF restaurant to the next stop light. The Church should be on the right
- 5/18/2006 (Thu) 2:45 PM — Tesson Heights Senior Living Community: 12335 West Bend Blvd, Sunset Hills, MO 63128 -- From I-270, west on Tesson Ferry to the next stop light; right onto West Bend Blvd. and follow to 12335
- 5/26/2006 (Fri) 2:00 PM — Meramec Bluff Senior Living: I-44 West to Fenton exit to Hwy 141 North; go a very short distance to the light at Vance Rd.; left on Vance Rd. about 1-1/2 miles to Meramec Bluff Rd.; left to top of hill and park in Chapel area.
- 6/4/2006 (Sun) 2:15 PM — Delmar Gardens of Chesterfield: 14855 North Outer Rd.--- Chesterfield, MO 63017 (west on I-270 to Chesterfield Parkway; at top of hill, stay in righthand lane; turn right onto North Outer 40, then right into Delmar Gardens driveway.)
- 6/25/2006 (Sun) 2:00 PM — Delmar Gardens North: 4401 Parker Rd., Florissant MO 63033: From I-270 at New Halls Ferry Rd., go left (North) about 1 mile to Parker; right on Parker to Delmar Gardens North on left.

(Continued on p. 8)

(from p. 7)

- 7/2/2006 (Sun) 2:30 PM — Garden Villas South: 3457 Tesson Ferry Rd.: I-270 South to Tesson Ferry Rd.; west about 3 miles to Butler Hill Rd.: follow signs to entrance.
- 7/28/2006 (Fri) 2:00 PM — Garden Villas of Chesterfield: 14901 North Outer 40, St. Louis, MO 63017: West on I-64/ US 40 to Chesterfield Parkway; right (North) to North Outer 40; right (East) and almost immediately turn left into Garden Villas. (For your info, this is next door to Delmar Gardens of Chesterfield where we will play on January 8.)
- 10/22/2006 (Sun) 2:30 PM — Delmar Gardens Meramec Valley: #1 Arbor Terrace, Fenton, MO 63026 -- Take hwy 30 West (Gravois Rd.). Cross Hwy 141 and continue to the first stop light. That is Summit--turn right on Summit and take the immediate left on the Outer Rd. Go 1/4 mile on your right and you are there.
- 11/12/2006 (Sun) 2:15 PM — Delmar Gardens of Chesterfield: 14855 North Outer Rd.--- Chesterfield, MO 63017 (west on I-270 to Chesterfield Parkway; at top of hill, stay in righthand lane; turn right onto North Outer 40, then right into Delmar Gardens driveway.)
- 12/8/2006 (Fri) 12:45 PM — Shepherd's Center of Webster Groves/ Kirkwood: 1333 West Lockwood --St. Louis, MO 63122: From I-270, exit Big Bend Blvd. going East past about 3 stop lights to Berry Rd.; left under I-44 across rail tracks and past Westborough Country Club; left at the next light into driveway on right.

HAPPY NEW YEAR !!!



GATEWAY HARMONICA CLUB
14650 Baraton Drive
Florissant, MO 63034